

DOUBLE BLOCK MOUNT

TOOL-TUBE™

Mounting Instructions

Mount Kit Parts List

- Four (4) M8x1.25x40mm button head stainless steel bolts
- Four (4) M8x1.25 stainless steel nylon insert lock-nuts
- Four (4) stainless steel washers (use these *or* the fender washers)
- Four (4) stainless steel fender washers (ideal when mounting to aluminum panniers)
- Two (2) mount blocks
- Two (2) vinyl-coated Mil-spec band clamps
- One (1) 5mm hex key

Other Things You Will Need

- Loctite 242 (Loctite Blue)
- 8mm (or 5/16") wrench for the band clamp, preferably a socket
- 13 mm wrench for the lock nuts
- 5/16" or 8mm drill
- Silicone sealer (a suggestion if mounting to your panniers)

Preparation

We suggest that you tape a sheet of paper around the tube so that it covers that portion that will make contact with the mounting blocks, and prevent—or at least minimize—the marks left on the tube during installation. Use a small piece of tape so that it is easy to remove just before you tighten the band clamps. Be sure to place the tape where you will be able to get to it easily after positioning the tube.

We also suggest that you leave the cap on the tube, as this will help you to visually center the tube. You can use a rule, but we will leave that up to you as to what and where to measure from/to.

If mounting to your panniers, be sure to allow spacing for when installing or removing panniers, and the location of any pannier locking mechanism, such as the tabs on Touratech panniers that engage the pannier frames.

Installation

Okay, here we go. These directions may be more detailed than you need, being the extremely competent and clever bike mechanic that you are, but we just wanted to be as clear and complete as we could.

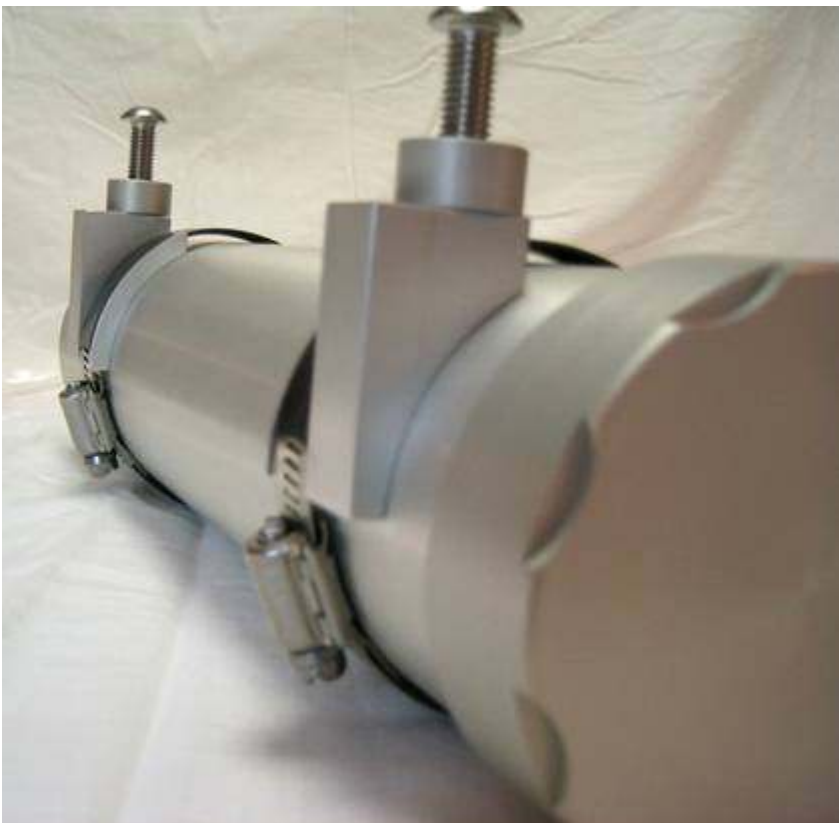
1. Drill four (4) 8 mm (5/16") holes through the surface to which you want to attach the mounts. The distance between the 2 mounts is not critical, but should be about 5–6 inches, so that the weight of the Tool-Tube and its contents are distributed across both mounts as evenly as possible. The distance between the hole centers on the mounts is 3.25 inches. **IMPORTANT:** The top and bottom holes for the two (2) mounts need to be

equal distances apart and square between the 2 mounts so the tube lies perpendicular to and firmly against each mount.

2. Thread two (2) 40mm M8 button head bolt through the holes in a mount. Tighten the bolts firmly into the mount using the supplied 5mm hex wrench. Then pass them through the holes you just drilled. The curved surface on the mount should face away from the mounting surface, as this is where the tube mates to the mount. There is no right or left mount. The idea is to keep the band clamps and the “shoulders” they hang from as evenly distributed across the tube as possible, and you should position the mounts accordingly. The “shoulders” on the mounts that the bands attach to can be towards the center of the tube or not—your choice.
3. Install your choice of washer and a lock-nut onto the end of each bolt from the other side of the surface to which you are attaching the mount.
4. Tighten the nuts just enough so that you can still slip the band clamp onto the “shoulder” of the mount. Leave the final tightening until after the tube is mounted and the band clamps are tight. This is so that the mounting block can sit completely against the curved surface of the tube as the band clamp is tightened.
5. Repeat steps 2-4 with the other mount block.
6. Hold the tube in your hands and align “*GT-MOTO*” on the end of the tube so that it is horizontal (and upright). This is how it will sit in the mounts. You can choose exactly how to align your tube—with the rake of the motorcycle, or level with the ground, etc. It is also up to you which side of the bike to place the end-cap towards, but we like to keep it on the side opposite the kick-stand, so than when you remove the end-cap, things don’t tend to fall out.
7. Tighten the screws on the band clamps a little so that they are engaged with the end of the band.
8. Place both band clamps onto the tube, so that the screws will face down from the side nearest the mounts, place the tube against the mounts, and slip the bands onto the curved “shoulders” of the mount blocks. The shoulders are designed with a small lip along their length to retain the band clamp.
9. Make sure the screw “carrier” of the band clamp does not rest on or make contact with the shoulder of the mount block. We like to slide the screw carrier very close to the shoulder of the block, but not contacting it, so that it is not easily visible from the rear of the bike (see pictures).



10. Notice that the screw housing and the little tang underneath it does not sit on the mount "shoulder" The screws and bushings shown are from an R12GS mount kit, but the same principle applies to the hanging, single, and double block mounts.



11. Slowly tighten the screws on the band clamps, working between the two, as you maintain the alignment of the tube, centered from left to right, and keeping “*GT-MOTO*” horizontal. Make sure the bands stay on the shoulders and are retained by the “lip” on the shoulders. Once you are comfortable with the alignment, remove the paper you put on to protect the finish, and tighten the band clamps securely. Don’t forget, the tube will rotate slightly as you tighten the clamps, so you will want to allow for that in your alignment if you would like “*GT-MOTO*” to remain horizontal. Also, the screw carrier will move towards the shoulder as you tighten the band clamps, so leave a little extra room there.
12. After tightening the band clamps, finish tightening the lock nuts.
13. Now fill your Tool-Tube with those important things that you want with you wherever you go, and go for a ride!

IMPORTANT! Keep your 5mm hex key with you, and check your bolts and clamps periodically to make sure they stay tight. Keep the O-ring and threads clean and lubricated with a little grease. The O-ring is what keeps the cap tight on the tube. We have lubricated the O-ring and threads for you with a little clear, silicone-based automotive grease.